



Blue Sky Sunseeker Superhawk 34

Builder:	Sunseeker International	Length:	11m / 36.08ft
Year:	2000	Beam:	3.1m / 10.17ft
Engines:	Volvo Penta KAD 44 260hp	Draft:	1.14m / 3.74ft
Speed:	39 knots	Accommodation:	4 Guests
Engine Hours:	960	Location:	United Kingdom

Price: GBP 109,950 inc VAT

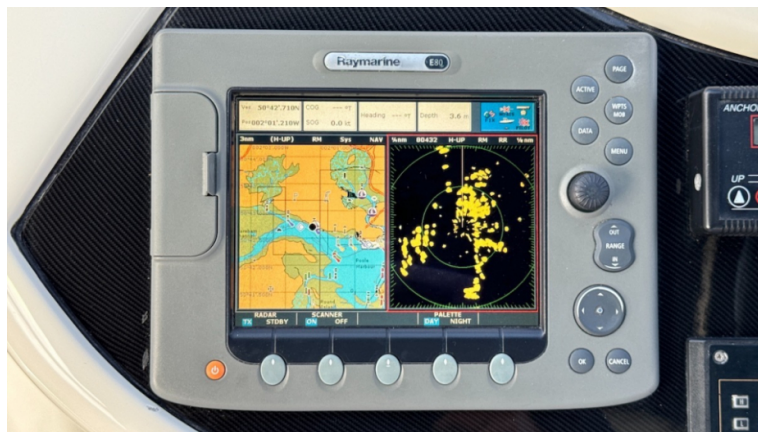
Blue Sky



Blue Sky



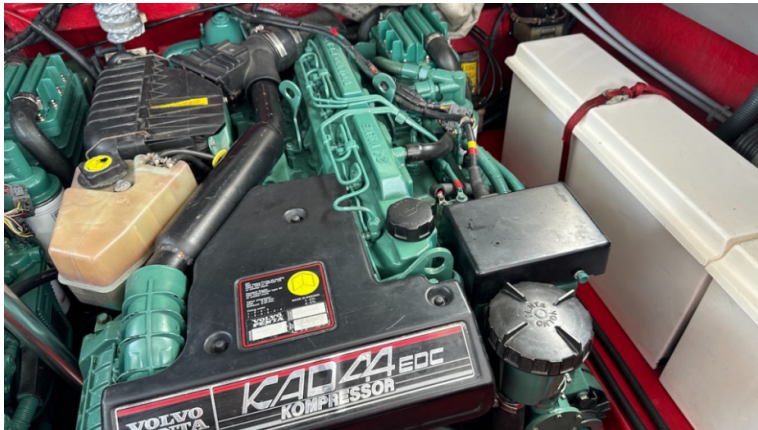
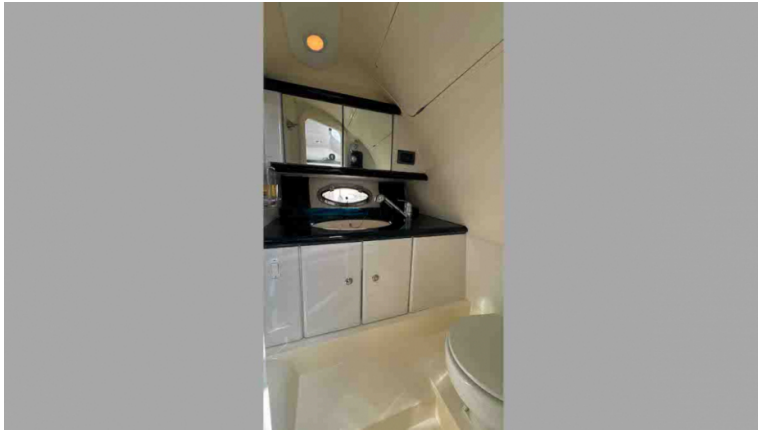
Blue Sky



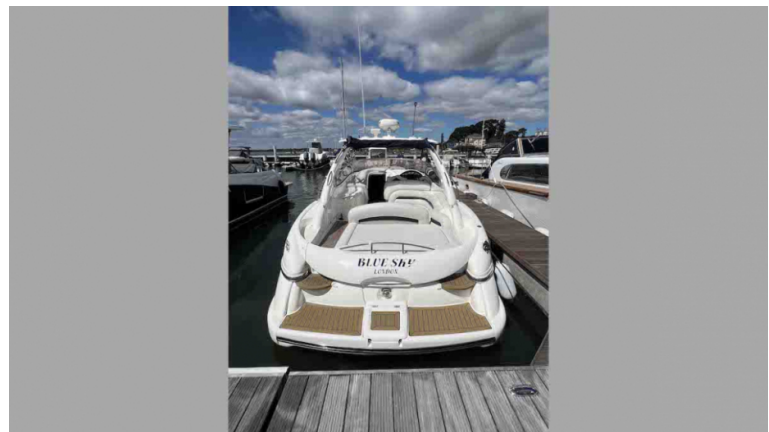
Blue Sky



Blue Sky



Blue Sky



Description

Sunseeker Superhawk 34 (1998 Model Year) Twin Volvo Penta KAD44 diesel engines (260Hp each). Moore Yachts are extremely excited to represent this stunning and well specified example of the legendary Sunseeker Superhawk 34 "Blue Sky" for sale. The Sunseeker Superhawk 34 lines are striking from all angles and this one is no exception in her stunning white colour scheme. This example has been regularly used and enjoyed on the South Coast in the UK and is currently lying in Poole. She has benefitted from many upgrades to her specification as well as comprehensive servicing (including major engine overhaul in 2016) and meticulous maintenance during current ownership. The Sunseeker Superhawk 34 exudes quality throughout with her clean and crisp cockpit upholstery and the most desirable engines for this model year. This Sunseeker Superhawk 34 has to be one of the nicest examples we have seen recently and is ready to be enjoyed immediately..... Please get in contact to discuss this great opportunity before it's too late! you won't be disappointed..... A full walk-through video can be found on our YouTube channel at: <https://youtube.com/@MooreYachtsLtd?si=Gx7xlHGln01VfIKM>

Layout / Interior

The Superhawk 34 benefits from a double berth forward plus a convertible occasional berth made from the saloon/dinette seating area. There is U-Shaped saloon seating shaped around the moveable table, which converts to the occasional berth. The heads are located to Starboard with shower facility and the galley is directly to Port as you enter the saloon.

Interior Colours:

High gloss white lacquered cabinetry with navy fiddles, White vinyl roof linings and window bands. Contemporary grey modern upholstery with teak throughout the accommodation areas. All fittings and handles are finished in a contemporary chrome finish.

Cockpit Colours:

White Silvertex upholstery with navy panels and piping (New 2017/18). Teak flooring throughout cockpit with updated flexiteak flooring on bathing platform.

Covers: Navy camper canvas covers with navy cockpit tonneau cover and helm cover.

Specification

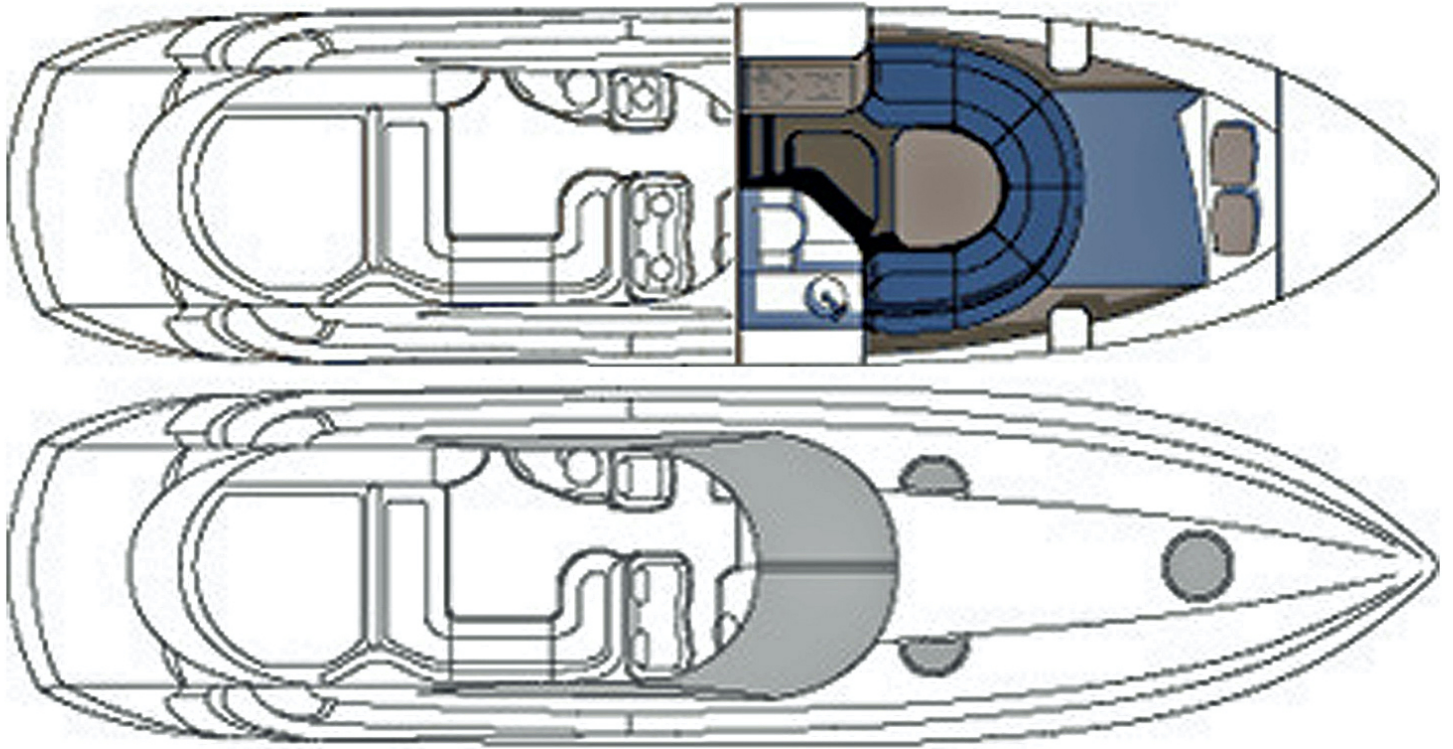
General Equipment:

- Bow thruster (New 2016)
- Teak cockpit
- Antifouling
- AC shore power/battery charger
- Alpine stereo with CD Changer
- Saloon and cockpit speakers
- Overhead downlights in radar arch
- Drinks holders in cockpit and helm area
- Upgraded chrome navigation lights
- Automatic bilge pumps
- Automatic fire extinguishers
- Electric anchor winch with deck & cockpit controls (Upgraded in 2023)
- Quick anchor chain Counter
- Lewmar stainless steel anchor
- New "Silververtex" cockpit upholstery (2017)
- Saloon Fridge
- Full camper suntop & tonneau cover (Cockpit covers replaced in 2016)
- Cockpit wetbar
- Power lift engine hatch (new 2023)
- Hot & cold water
- Hot & cold transom shower
- Single electric hob
- Teak cabin flooring
- Flexiteak bathing platform and steps
- Trim tabs
- Fold out cockpit table
- Fold away swim ladder
- Rudder angle indicator
- Stainless steel guard rails on deck
- Stainless steel deck hardware
- Sanshin remote controlled spotlight
- Reconditioned turbos with stainless liners in 2022
- Latest design Volvo Penta propellers in 2022
- This example of the **Sunseeker Superhawk 34** has been lovingly maintained with many upgrades to her specification including a major engine overhaul in the first season of current ownership and therefore viewing is essential to appreciate the quality and high standard of fit out that this boat has to offer.

Navigation:

- Raymarine E80 multi-function display
- Raymarine GPS
- Raymarine ST6001 Autopilot
- Raymarine fishfinder
- Icom DSC VHF radio
- Depth sounder
- Full Volvo engine instrumentation
- Compass

Layout



Disclaimer

The Company offers the details of this vessel in good faith but cannot guarantee or warrant the accuracy of this information nor warrant the condition of the vessel. A buyer should instruct his agents, or his surveyors, to investigate such details as the buyer desires validated. All prospective purchasers should be aware that the "Manufacturers Model Year" varies from builder to builder and does not necessarily correspond to the vessel's year of build. This vessel is offered subject to prior sale, price change, or withdrawal without notice. In this case we are acting as Brokers only. Whilst every care has been taken in their preparation, the correctness of these particulars is not guaranteed. The particulars are intended only as a guide, and they do not constitute a term of any contract. A prospective Buyer is strongly advised to check the particulars and where appropriate at his own expense to employ a qualified Marine Surveyor to carry out a survey and/or to have an engine trial conducted which if conducted by us shall not imply any liability for such engine on our part. Life-saving appliances do not form part of the inventory and it is for the buyer to ensure they are in date and suitable for his purposes.