



## Beneteau Antares 7 OB

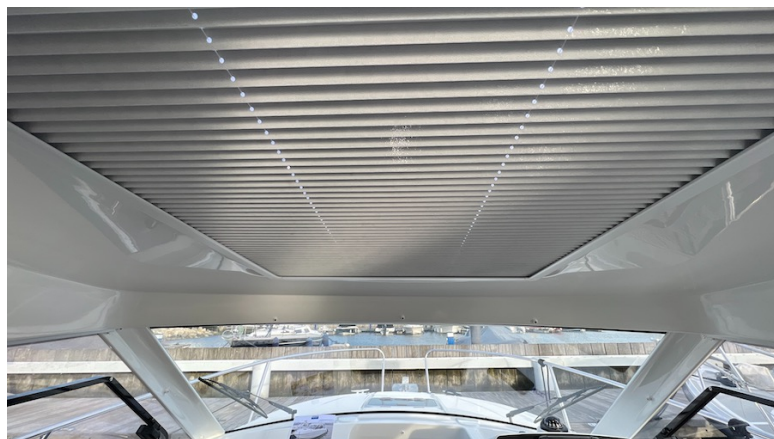
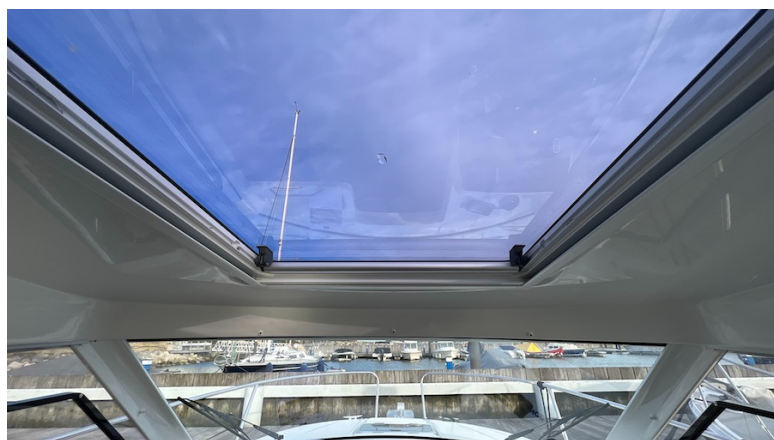
Builder:	Beneteau	Length:	7.5m / 24.6ft
Year:	2019	Beam:	2.53m / 8.3ft
Engines:	Suzuki DF150 APX 150hp	Draft:	0.8m / 2.62ft
Speed:	30 knots	Accommodation:	4 Guests
Engine Hours:	222	Location:	United Kingdom

**Price: GBP 49,995 inc VAT**









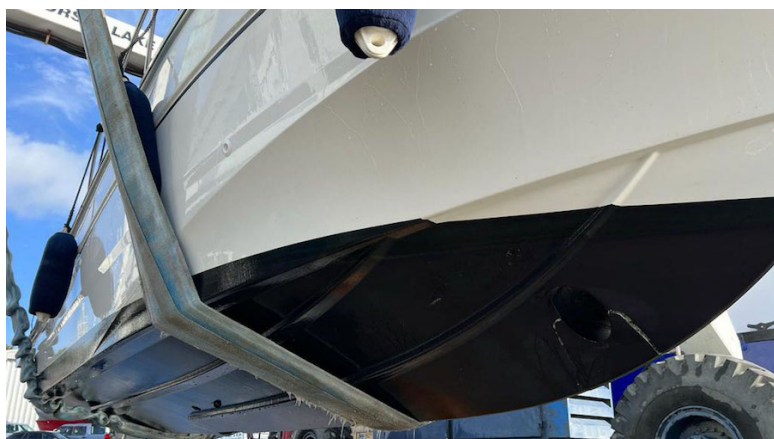
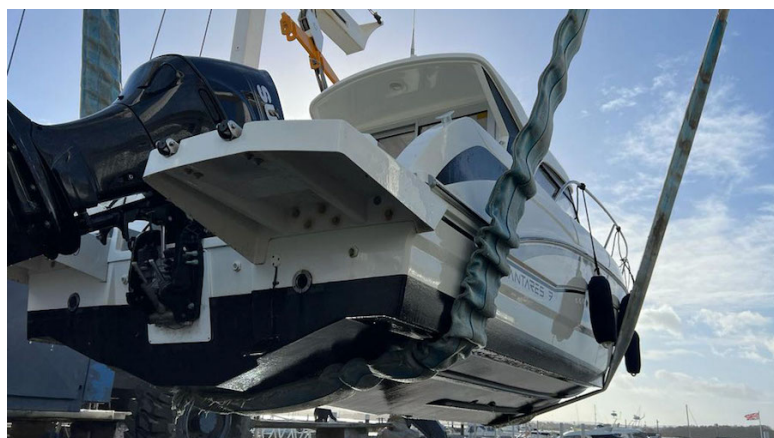
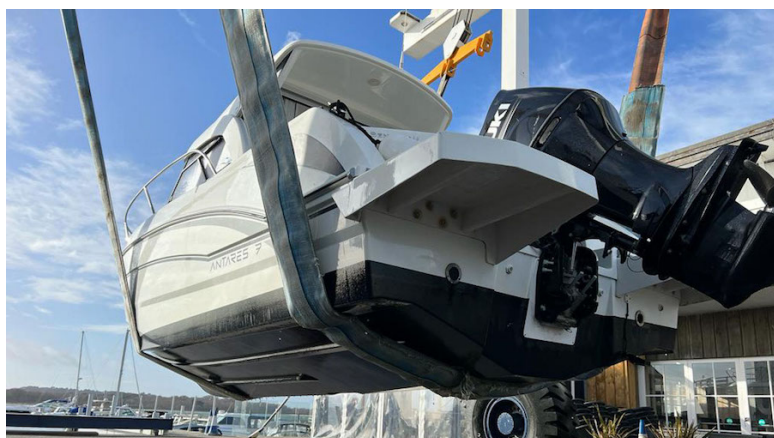














## Description

Beneteau Antares 7 OB (2019 Model Year / 2018 Build). Single Suzuki DF150APX Petrol Outboard Engine (150Hp). Moore Yachts are extremely pleased to offer this lovely example of a Beneteau Antares 7 OB for sale. Benefitting from a well-considered specification including a Chartplotter/GPS/Fishfinder and new Anchor Windlass, this has to be one of the nicest examples of this popular Sports Fishing Pilothouse from the highly respected Beneteau range of boats. Having recently been serviced (Feb 2023) and Antifouled (Late 2022) this example is ready to be enjoyed for the 2023 season and is available for immediate delivery. Based on the South Coast in the UK this is a unique opportunity which should not be missed and we welcome your enquiry.....

Please contact Christian on +44(0)7855441150 to discuss in more detail.

Video available on our youtube channel: <https://youtu.be/NoEeR1VQXvs>

## Layout / Interior

COLOUR SCHEMES: Interior upholstery: Corrado Beige Woodwork Alpi Noyer Brown Oak laminated floors WHEELHOUSE: Headroom: 2,05 m / 6'9" Wheelhouse with one-piece translucent glass windscreen Side windows in grey-tinted (translucent glass) Opening starboard side windows 2 leaf aft window door in translucent PMMA Anodized aluminium frame with lock 1 Electric windscreen wipers STEERING STATION (TO STARBOARD): Pilot console with space for electronics Steering compass Rev counter Fuel and engine gauge indicator 12 V socket Luxe steering wheel Encased side engine control Adjustable driver's seat Pilot footrests Lighting from 1 ceiling light Hydraulic steering GALLEY (TO STARBOARD): Kitchen with polyester sink, tap on hose for inside/outside use Pressured cold water SALOON: Headroom: 2,02 m / 6'8" Inward-facing saloon convertible into a bed (option) (Length = 2 m / 6'7" - Beam = 0,92 m / 3') Co-pilot seat with swivelling seat back (navigation / saloon positions) Table Alpi Noyer Storage lockers under side seating Lighting from 1 ceiling light Battery master switch under the aft seat HEAD: Headroom: 1,38 m / 4'6" Seawater toilet with Manual flush Holding tank with electric pump out sink with tap Storage under and next to the sink Door Lighting from 1 ceiling light FORWARD CABIN: Headroom: 1,10 m / 3'7" Double berth (Length max = 2 m / 6'7" - Beam max = 1,65 m / 5'5") Storage lockers Lighting from 1 ceiling light Opening deck hatch, in the cabin



## Specification

### GENERAL EQUIPMENT:

- Electric Anchor Windlass (New 2021)
- Kedge Anchor with Chain and warp
- Natural Solid wood cockpit table with leg
- Saloon Seating conversion for double berth
- Interior Joinery in Alpi Noyer with Brown Laminate floor
- Interior Upholstery in Corrado Beige
- Storage lockers under side seating
- Galley to Starboard with fitted sink and tap on hose
- Portable butane gas hob
- Jabsco marine toilet manual flush
- Holding tank with electric discharge pump
- Electric Bilge Pump
- Manual Bilge Pump
- Shore power with Battery Charger/Conditioner
- Black out Curtains for all windows and forward bunk hatch
- Sliding helm seat - Seat hinges to create larger food prep/washing area
- Removeable wooden rear deck table
- Sunbathing platform
- Infil frame and cushion between aft and forward cockpit seating
- Cockpit Shower on long extending hose stored in rear quarter panel (Long enough to shower on bathing platform)
- Fenders and Warps

### NAVIGATION:

- Lowrance Elite Chartplotter GPS
- Raymarine VHF
- VHF Aerial
- Speed and Depth Instruments
- Suzuki engine Instrument
- Compass

### HULL COMPOSITION:

- Sandwich (Polyester resin - Glass fiber - Balsa core)
- White gel coat
- Winching ring on bow
- Injection moulded hull

### DECK COMPOSITION:



- Sandwich (Polyester resin - Glass fiber - Balsa core)
- White gel coat
- Partial deck counter-mould
- Grey protection rail on the hull-deck joint
- Wheelhouse roof in white gel coat
- Navigation lights = 1 all-round light on collapsible samson post
- Bi-colour navigation light

#### **MOORING LINES - MOORING:**

- Bow fitting
- Self-bailing mooring locker with hatch cover
- Eye bolt to secure mooring
- 2 Foredeck cleats in aluminium, 200 mm / 8"
- 2 Cleats amidships in aluminium, 200 mm / 8"
- 2 Aft cleats in aluminium, 200 mm / 8"

#### **SAFETY ON DECK:**

- Stainless steel open pulpit surrounding the cockpit up to the cockpit steps
- Asymmetric catwalks
- 2 Stainless steel handrails on wheelhouse uprights
- 2 Stainless steel handrails on wheelhouse hood
- 2 Stainless steel handrails on cockpit coamings
- 1 Stainless steel handrail on the cockpit bench seat

#### **COCKPIT:**

- Self-bailing cockpit
- Sliding aft bench seat, 3 place
- Additional cockpit fittings (see optional extras)
- Lockers in cockpit bottom:
  - - 1 Large central lockable chest with gas piston assisted opening
  - - 2 Optional lockers in bench seats (option)
- 2 Rod holders
- Lighting from 1 ceiling light
- (280 L / 74 US Gal) hermetic and ventilated rotomolded fuel tank, in the back of cockpit locker
- Fuel deck filler on stern deck
- Starboard bath access
- Security door
- Telescopic swimming ladder

#### **ELECTRICAL:**

- 6 function 12 V electrical panel



- 12 V socket
- 2 Bilge pumps: 1 Manual pump - 1 Electric pump
- Battery switch located in compartment under the aft saloon seat
- Navigation lights = 1 all-round light on collapsible samson post - Bi-colour navigation light
- Lighting from 4 ceiling lights
- Installation for engine battery delivered with the pre-rigging (battery not delivered)

## **MANUFACTURER PROVIDED DESCRIPTION:**

Timeless, the latest Antares 7 has its root in the three values of safety, simplicity and habitability that have been present since the beginning of this range. A reliable boat designed to enjoy short coastal cruises; the Antares 7 can be towed.

The Antares 7's innovative flared-hull boasts safety and outstanding seakeeping, offering wonderful driving sensations. This outboard motorboat has a very elegant silhouette, thanks to her cap's powerful V profile. Simple and safe, an aft platform with a removable ladder provides access to the sea. This is closed off by a small gate when the boat is underway.

The wheelhouse is surrounded by windows and has a 360° view of the sea. A sliding glass hatch on the roof bathes the interior in natural light, which considerably increases the feeling of space. The walnut woodwork and upholstery colour contribute to making the Antares 7 contemporary yet timelessly stylish.



## Layout



### Disclaimer

*The Company offers the details of this vessel in good faith but cannot guarantee or warrant the accuracy of this information nor warrant the condition of the vessel. A buyer should instruct his agents, or his surveyors, to investigate such details as the buyer desires validated. All prospective purchasers should be aware that the "Manufacturers Model Year" varies from builder to builder and does not necessarily correspond to the vessels year of build. This vessel is offered subject to prior sale, price change, or withdrawal without notice. In this case we are acting as Brokers only. Whilst every care has been taken in their preparation, the correctness of these particulars is not guaranteed. The particulars are intended only as a guide and they do not constitute a term of any contract. A prospective Buyer is strongly advised to check the particulars and where appropriate at his own expense to employ a qualified Marine Surveyor to carry out a survey and/or to have an engine trial conducted which if conducted by us shall not imply any liability for such engine on our part. Life-saving appliances do not form part of the inventory and it is for the buyer to ensure they are in date and suitable for his purposes.*